

Challenge: import into GNU Health (GH) with GH-functionality from a list with 110 entries for the laboratory with structure like:

S/N	SERVICES / TESTS	CODE	Bench / Unit	Price
1	ANC (Micro)	ANC	General	N2,100
2	Urine MCS (Adult)	URC	Urine bench	N1,100
3	Urine MCS (Children)	URC	Urine bench	N600
4	Urine Analysis (Adult)	URA	Parasitology	N400

1. identify corresponding fields in GNU Health:

1.1 use GH 3.8 from federation.gnuhealth.org with client from <https://downloads.tryton.org/5.0/tryton-5.0.37.exe>

1.2 use documentation from

https://en.wikibooks.org/wiki/GNU_Health/Products_and_Services_Management

1.3 search for Product/Products in GH ==> there are 406 products with 3 different Types:

373 Goods (like Medicaments) and 33 Service (like Urine Analysis Charges). There is no entry with Type Asset in the demo database.

Tryton - Administrator - GNU SOLIDARIO HOSPITAL [EUR]							
GH Fed							
Product Configurac... x Products x							
Products							
Switch View Previous Next New Save Reload/Undo Attachment(0) Note(0) Action Relate Report E-Mail Print							
Search							
Name	List Price	Cost Price	Type	Account Category	Default UOM	Purchasable	
310	100.0000	100.0000	Goods		Unit	<input type="checkbox"/>	
abacavir (ABC)	0.0000	0.0000	Goods	Medicaments / WHO essential Medicines	Unit	<input type="checkbox"/>	
acetazolamide	0.0000	0.0000	Goods	Medicaments / WHO essential Medicines	Unit	<input type="checkbox"/>	
acetic acid	0.0000	0.0000	Goods	Medicaments / WHO essential Medicines	Unit	<input type="checkbox"/>	
acetylcysteine	0.0000	0.0000	Goods	Medicaments / WHO essential Medicines	Unit	<input type="checkbox"/>	
acetylsalicylic acid	0.0000	0.0000	Goods	Medicaments / WHO essential Medicines	Unit	<input type="checkbox"/>	
aciclovir	0.0000	0.0000	Goods	Medicaments / WHO essential Medicines	Unit	<input type="checkbox"/>	
albendazole	0.0000	0.0000	Goods	Medicaments / WHO essential Medicines	Unit	<input type="checkbox"/>	
allopurinol	0.0000	0.0000	Goods	Medicaments / WHO essential Medicines	Unit	<input type="checkbox"/>	
amidotrizolate	0.0000	0.0000	Goods	Medicaments / WHO essential Medicines	Unit	<input type="checkbox"/>	
amikacin	0.0000	0.0000	Goods	Medicaments / WHO essential Medicines	Unit	<input type="checkbox"/>	
amiloride	0.0000	0.0000	Goods	Medicaments / WHO essential Medicines	Unit	<input type="checkbox"/>	
amiodarone	0.0000	0.0000	Goods	Medicaments / WHO essential Medicines	Unit	<input type="checkbox"/>	
amitriptyline	0.0000	0.0000	Goods	Medicaments / WHO essential Medicines	Unit	<input type="checkbox"/>	
amlodipine	0.0000	0.0000	Goods	Medicaments / WHO essential Medicines	Unit	<input type="checkbox"/>	
amodiaquine	0.0000	0.0000	Goods	Medicaments / WHO essential Medicines	Unit	<input type="checkbox"/>	
amoxicillin	0.0000	0.0000	Goods	Medicaments / WHO essential Medicines	Unit	<input type="checkbox"/>	
Amoxicillin 125mg/5ml oral liquid	1.0000	0.5000	Goods	Medicaments / WHO essential Medicines	mL	<input checked="" type="checkbox"/>	
Amoxicillin 500mg capsules	3.0000	0.5000	Goods	Medicaments / WHO essential Medicines	Capsules	<input checked="" type="checkbox"/>	
amoxicillin + clavulanic acid	0.0000	0.0000	Goods	Medicaments / WHO essential Medicines	Unit	<input type="checkbox"/>	
amphotericin B	0.0000	0.0000	Goods	Medicaments / WHO essential Medicines	Unit	<input type="checkbox"/>	
Ampicillin	0.0000	0.0000	Goods	Medicaments / WHO essential Medicines	Unit	<input type="checkbox"/>	
anti-D immunoglobulin (human)	0.0000	0.0000	Goods	Medicaments / WHO essential Medicines	Unit	<input type="checkbox"/>	
antitetanus immunoglobulin (human)	0.0000	0.0000	Goods	Medicaments / WHO essential Medicines	Unit	<input type="checkbox"/>	
antivenom immunoglobulin	0.0000	0.0000	Goods	Medicaments / WHO essential Medicines	Unit	<input type="checkbox"/>	
artemether	0.0000	0.0000	Goods	Medicaments / WHO essential Medicines	Unit	<input type="checkbox"/>	
artemether + lumefantrine	0.0000	0.0000	Goods	Medicaments / WHO essential Medicines	Unit	<input type="checkbox"/>	
artesunate	0.0000	0.0000	Goods	Medicaments / WHO essential Medicines	Unit	<input type="checkbox"/>	
artesunate + amodiaquine	0.0000	0.0000	Goods	Medicaments / WHO essential Medicines	Unit	<input type="checkbox"/>	
ascorbic acid	0.0000	0.0000	Goods	Medicaments / WHO essential Medicines	Unit	<input type="checkbox"/>	
asparaginase	0.0000	0.0000	Goods	Medicaments / WHO essential Medicines	Unit	<input type="checkbox"/>	
atazanavir	0.0000	0.0000	Goods	Medicaments / WHO essential Medicines	Unit	<input type="checkbox"/>	
atracurium	0.0000	0.0000	Goods	Medicaments / WHO essential Medicines	Unit	<input type="checkbox"/>	
atropine	0.0000	0.0000	Goods	Medicaments / WHO essential Medicines	Unit	<input checked="" type="checkbox"/>	
azathioprine	0.0000	0.0000	Goods	Medicaments / WHO essential Medicines	Unit	<input type="checkbox"/>	
azithromycin	0.0000	0.0000	Goods	Medicaments / WHO essential Medicines	Unit	<input type="checkbox"/>	
BACTEC Culture Analysis Charges	1.0000	0.0000	Service	Lab Services	Unit	<input type="checkbox"/>	
barium sulfate	0.0000	0.0000	Goods	Medicaments / WHO essential Medicines	Unit	<input type="checkbox"/>	
BCG vaccine	0.0000	0.0000	Goods	Medicaments / WHO essential Medicines	Unit	<input type="checkbox"/>	
berclometasone	0.0000	0.0000	Goods	Medicaments / WHO essential Medicines	Unit	<input type="checkbox"/>	

1.4 we see that there are fields of: Name, List price, cost price, Type, Account Category, Default UOM, and Purchasable

2. make a csv file:

2.1 S/N: there is no corresponding field, so we have to ignore it.

2.2 SERVICES / TESTS: we will use the GH-field Name for this

2.3 CODE: there is no corresponding field, so we have to ignore it for the moment (we will use it later in Variants).

2.4 Bench / Unit: we want to put it into Account Category

2.5 Price: we will use this for List price and for Cost price. We have to change the format from e.g. N2,100 to 2,100.0000

2.6 TYPE: we need to assign to each product a type (Assets, Goods, Services). We will assign only Services

3. we make a csv-file with:

Name,Account Category,List Price,Cost Price, Type

ANC (Micro),General,2100.0000,2100.0000,Services

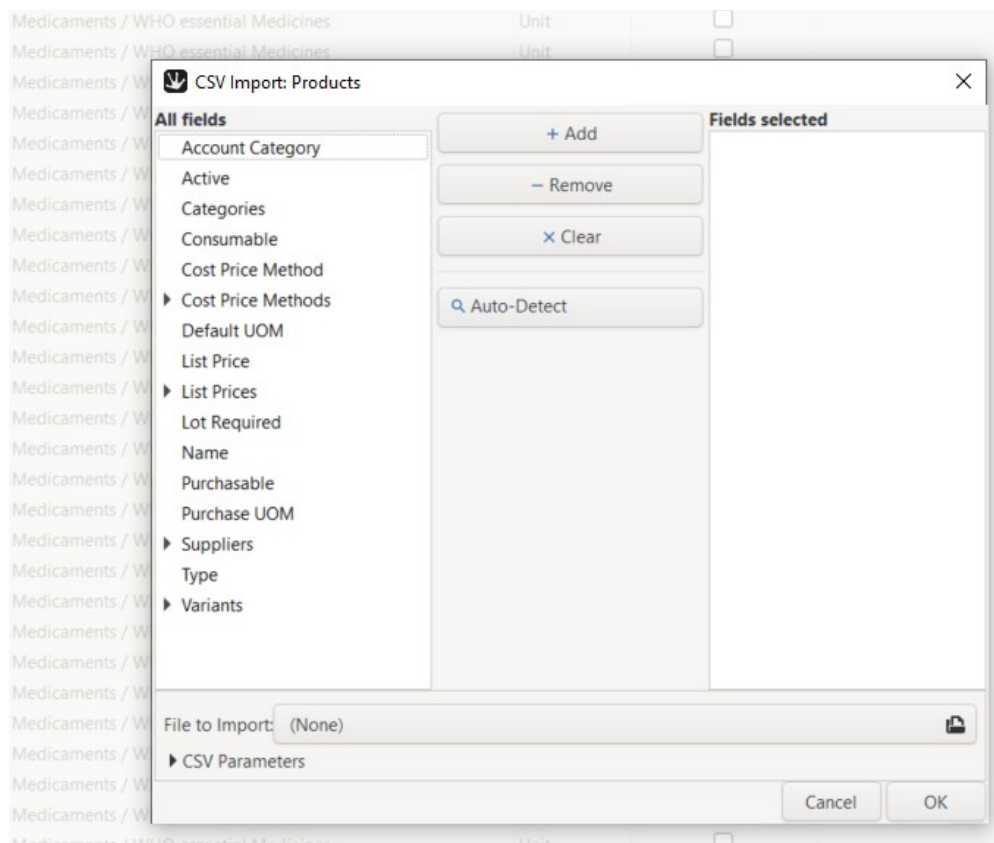
Urine MCS (Adult),Urine bench,1100.0000,1100.0000,Services

Urine MCS (Children),Urine bench,600.0000,600.0000,Services

4. we use the import function (triangle – drop down at Products: Import data):

The screenshot shows the Tryton - Administrator - GNU SOLIDARIO HOSPITAL [EUR] interface. The 'Products' configuration window is open, and the 'Import Data...' option is highlighted in the 'Products' menu. The main table displays a list of products with columns for Name, List Price, Cost Price, Type, Account Category, Default UOM, and Purchasable.

Name	List Price	Cost Price	Type	Account Category	Default UOM	Purchasable
Amoxicillin 500mg capsules	100.0000	100.0000	Goods	Medicaments / WHO essential Medicines	Unit	<input type="checkbox"/>
amoxicillin + clavulanic acid	0.0000	0.0000	Goods	Medicaments / WHO essential Medicines	Unit	<input type="checkbox"/>
amphotericin B	0.0000	0.0000	Goods	Medicaments / WHO essential Medicines	Unit	<input type="checkbox"/>
Ampicillin	0.0000	0.0000	Goods	Medicaments / WHO essential Medicines	Unit	<input type="checkbox"/>
anti-D immunoglobulin (human)	0.0000	0.0000	Goods	Medicaments / WHO essential Medicines	Unit	<input type="checkbox"/>
antitetanus immunoglobulin (human)	0.0000	0.0000	Goods	Medicaments / WHO essential Medicines	Unit	<input type="checkbox"/>
antivenom immunoglobulin	0.0000	0.0000	Goods	Medicaments / WHO essential Medicines	Unit	<input type="checkbox"/>
artemether	0.0000	0.0000	Goods	Medicaments / WHO essential Medicines	Unit	<input type="checkbox"/>
artemether + lumefantrine	0.0000	0.0000	Goods	Medicaments / WHO essential Medicines	Unit	<input type="checkbox"/>
artesunate	0.0000	0.0000	Goods	Medicaments / WHO essential Medicines	Unit	<input type="checkbox"/>
artesunate + amodiaquine	0.0000	0.0000	Goods	Medicaments / WHO essential Medicines	Unit	<input type="checkbox"/>
ascorbic acid	0.0000	0.0000	Goods	Medicaments / WHO essential Medicines	Unit	<input type="checkbox"/>
asparaginase	0.0000	0.0000	Goods	Medicaments / WHO essential Medicines	Unit	<input type="checkbox"/>
atazanavir	0.0000	0.0000	Goods	Medicaments / WHO essential Medicines	Unit	<input type="checkbox"/>
atracurium	0.0000	0.0000	Goods	Medicaments / WHO essential Medicines	Unit	<input type="checkbox"/>
atropine	0.0000	0.0000	Goods	Medicaments / WHO essential Medicines	Unit	<input type="checkbox"/>
azathioprine	0.0000	0.0000	Goods	Medicaments / WHO essential Medicines	Unit	<input type="checkbox"/>
azithromycin	0.0000	0.0000	Goods	Medicaments / WHO essential Medicines	Unit	<input type="checkbox"/>
BACTEC Culture Analysis Charges	1.0000	0.0000	Service	Lab Services	Unit	<input type="checkbox"/>
barium sulfate	0.0000	0.0000	Goods	Medicaments / WHO essential Medicines	Unit	<input type="checkbox"/>
BCG vaccine	0.0000	0.0000	Goods	Medicaments / WHO essential Medicines	Unit	<input type="checkbox"/>
berclometasone	0.0000	0.0000	Goods	Medicaments / WHO essential Medicines	Unit	<input type="checkbox"/>



File to import: your csv-file

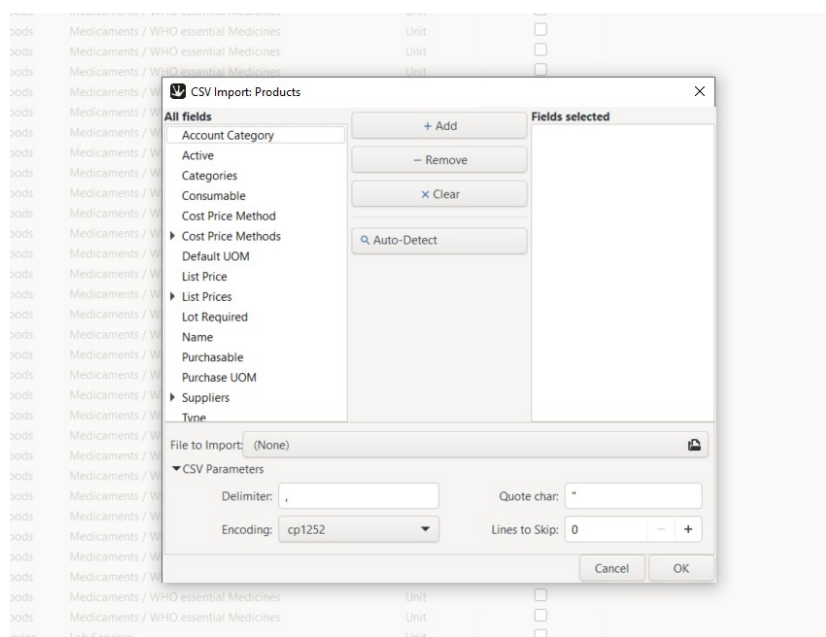
csv-parameters:

delimiter: ,

encoding: cp-1252

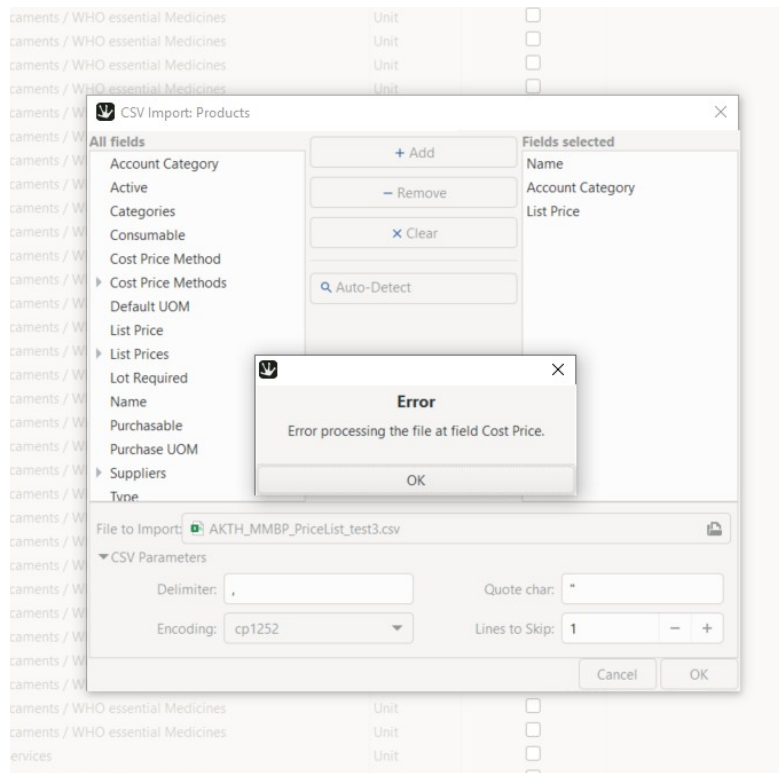
quote char: “

Lines to skip: 0



When we try to import, an error occurs:

Error processing the file at field Cost Price



4. we change our csv-file with deleting Cost Price:

4.1 change

Name,Account Category,List Price,Type

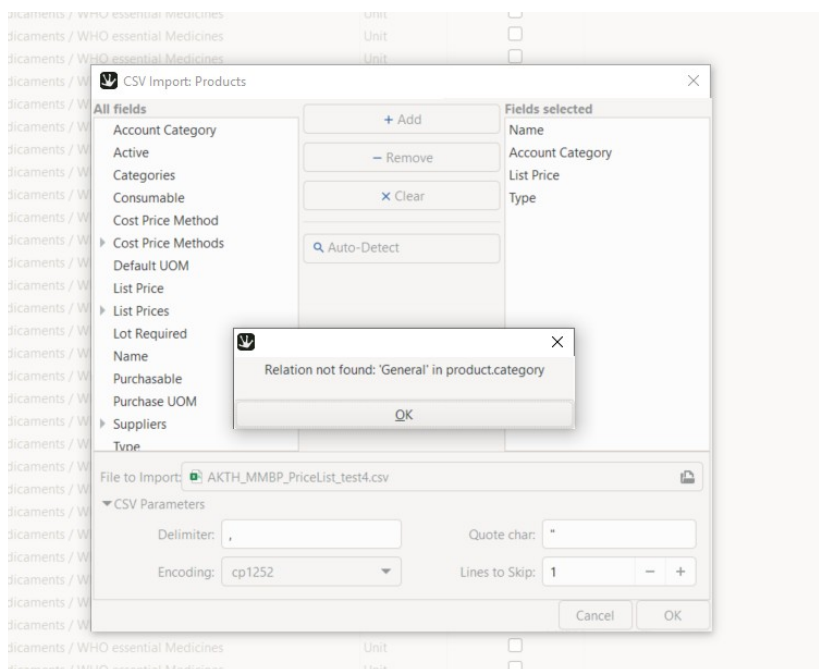
ANC (Micro),General,2100.0000,Services

Urine MCS (Adult),Urine bench,1100.0000,Services

Urine MCS (Children),Urine bench,600.0000,Services

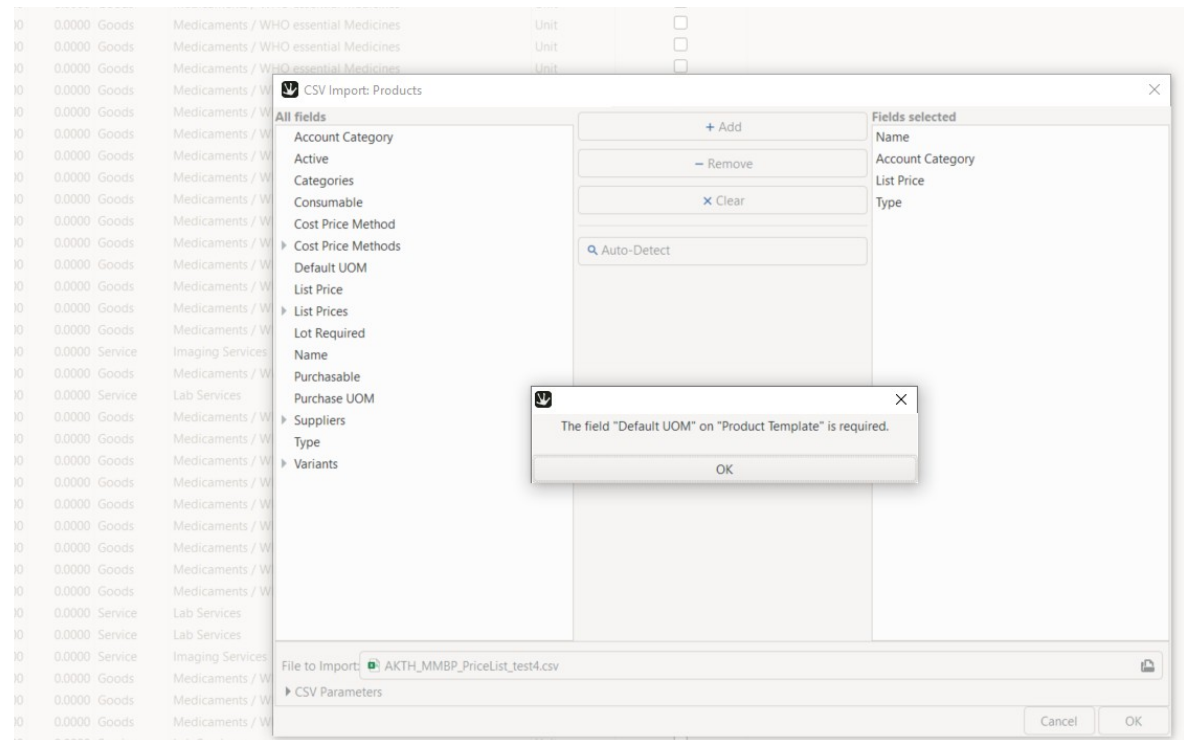
4.2 import again (choose file, click Auto-detect, then OK)

4.3: Error: Relation not found: 'General' in product.category



4.4 In our csv-file there are 12 Bench / Unit. For our test we will just create in Product/Categories/Categories „General“ (tick Accounting) and „Urine bench“ (tick Accounting).

4.5 Run import again

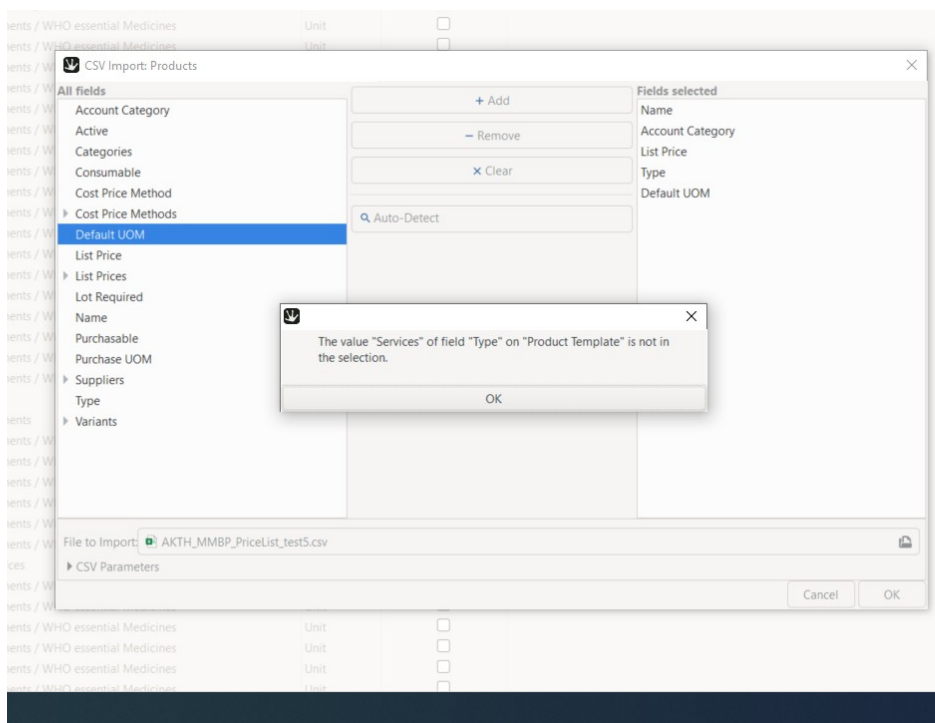


4.6: the field „Default UOM“ on „Product Template“ is required.

5. Change csv-file: add Default UOM with Unit
 Name,Account Category,List Price,Type,Default UOM
 ANC (Micro),General,2100.0000,Services,Unit
 Urine MCS (Adult),Urine bench,1100.0000,Services,Unit
 Urine MCS (Children),Urine bench,600.0000,Services,Unit

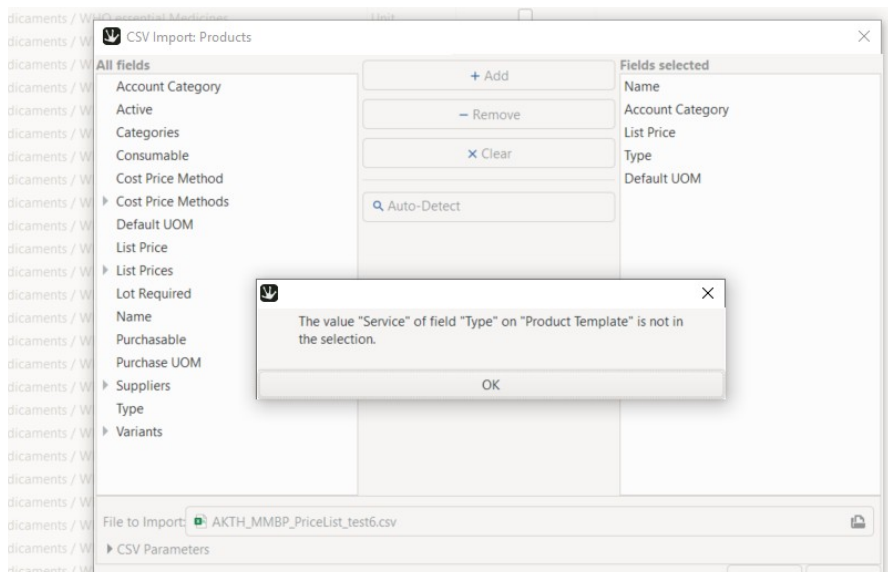
5.1 Run import

5.2 error: the value „Services“ on Field „Type“ on Product Template is not in the selection



5.3 change Services to Service in csv-file, run import

5.4 error: the value „Service“ on Field „Type“ on Product Template is not in the selection



5.5 now I do not know what to do. If I go to Action – Translate view there is the field Type and also Service

The screenshot shows the 'Translate view' of a software application. The left sidebar has a navigation tree with 'Products' and 'Configuration' expanded. The main table lists fields for translation. The 'Type' column shows 'Selection' for 'product.template.type'. The 'Resource' column shows '-1 product' for 'product.template.type'.

Field Name	Language	Type	Resource	Module
product.template.name	Field	-1 product		
product.template.category	Field	-1 product		
product.template.create_uid	Field	-1 product		
product.template.create_date	Field	-1 product		
product.template.name	Field	-1 product		
product.template.products	Field	-1 product		
product.template.cost_price_method	Field	-1 product		
product.template.cost_price_method	Selection	-1 product		
product.template.cost_price_method	Selection	-1 product		
product.template.write_uid	Field	-1 product		
product.template.default_uom	Field	-1 product		
product.template.rec_name	Field	-1 product		
product.template.write_date	Field	-1 product		
product.template.active	Field	-1 product		
product.template.list_price	Field	-1 product		
product.template.consumable	Field	-1 product		
product.template.type	Field	-1 product		
product.template.type	Selection	-1 product		
product.template.type	Selection	-1 product		
product.template.type	Selection	-1 product		
product.template.id	Field	-1 product		
product.template.default_uom_category	Field	-1 product		
product.template.cost_price	Field	-1 product		
product.template.forecast_quantity	Field	-1 stock		
product.template.quantity	Field	-1 stock		
product.template.cost_value	Field	-1 stock		
product.template.lot_required	Field	-1 stock_lot		
product.template.lot_required	Help	-1 stock_lot		
product.template.customer_taxes	Field	-1 account_prodi		
product.template.taxes_category	Field	-1 account_prodi		
product.template.taxes_category	Help	-1 account_prodi		
product.template.account_expense_used	Field	-1 account_prodi		
product.template.supplier_taxes_used	Field	-1 account_prodi		
product.template.supplier_taxes	Field	-1 account_prodi		
product.template.account_expense	Field	-1 account_prodi		
product.template.account_expense	Help	-1 account_prodi		

But what now???

5.6